

Command Float Tires



JD 1770NT /Alliance 340/80R20 Tires Installation Instructions



Step 1: Set the planter to transport mode.



Step 2: Install cylinder stops



Step 3: Lower the planter onto the cylinder stops, making sure the weight is transferred off the outside frame.



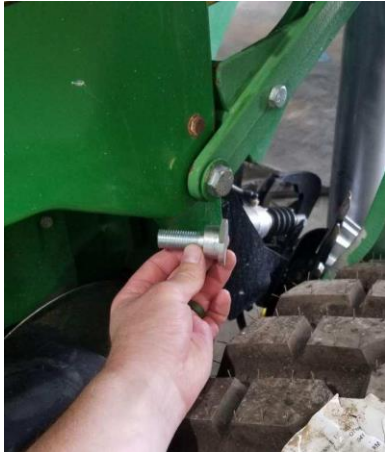
Step 4: Remove lift arm hardware



Step 5: With assistance, remove the arm pin and move the frame away from the planter



Step 6: Remove factory bolts on each side of the tire and replace with supplied bolts to improve clearance



Step 7: Remove factory hubs from the rims and install onto the new rims, and repack the bearings



Step 8: Install a spacer on one side of the spindle and insert the new spindle into the hub, then install the second spacer onto the other side



Step 9: Attach the new wheels to the new frames using the existing hardware from the factory wheels



Step 10: Install the new frames to the planter using factory hardware. Note: it is critical to identify each frame for the correct alignment. The pictures below show how each frame must be aligned with the hydraulic cylinders.

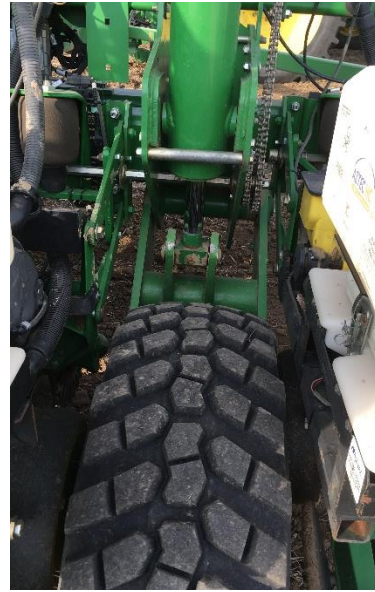
Left



Centers



Right



Step 11: Check tire pressure. Inflate to 35-40 psi